

Capability Statement

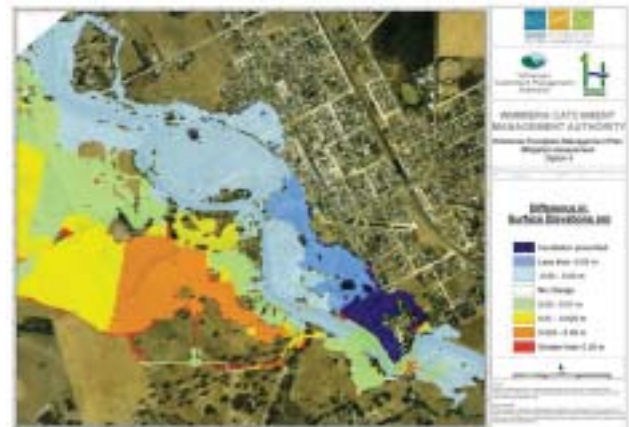
Flood Risk Assessment and Floodplain Management



Capabilities

- Rigorous hydrologic analysis techniques to evaluate design flood events in urban and rural catchments
- State-of-the-Art numerical modelling of waterway and floodplain hydraulics.
- Floodplain mapping for emergency flood response and land use planning
- Preparation of flood related planning scheme amendment
- Preparation of floodplain management plans
- Assessment of proposed development flood related impacts and conceptual design of mitigation measures
- Community consultation programs to engage the local community.
- Strategic flood related advice for scheme planning matters and VCAT appeals.
- GIS interface development to facilitate use of flood information databases

topographic survey, waterway management, geomorphologic and community consultation services. With staff benefiting from over 25 years experience in the industry, we provide the understanding and technical excellence necessary to meet these specialised engineering and environmental challenges. We combine leading edge technology with outstanding project experience to deliver economic and environmentally sustainable solutions.



Overview

Floodplains are a vital part of Australia's natural infrastructure. Our floodplains are fundamental to our local economies and quality of life. They support significant agricultural production, high value wetland ecosystems and provide a pleasant place to live. However, flooding can result in significant damage to property and infrastructure located on the floodplain. As such, appropriate planning is required through a risk management framework.

There is increasing pressure on our floodplains from the competing needs of commercial, recreational and residential interests. Careful planning and comprehensive assessment is required to preserve these complex floodplain dynamics and safeguard our community.

A leader in floodplain management, Water Technology offers a comprehensive range of services to both regulatory authorities and the property development community. Further, Water Technology has strong relationships with specialist consultancies to provide

Selected Projects

Horsham and Dimboola Flood Studies and Floodplain Management Plans

Client: Wimmera Catchment Management Authority

Assessment of existing flood risk through rigorous hydrologic, hydraulic and flood damage assessments. Extensive community consultation to engage the local community in the development of a floodplain management plan. Preparation of flood related planning scheme zone and overlays delineation.



King River Rural Floodplain Management

Client: North East Catchment Management Authority

Quantitative analysis of observed flood information to assess planning scheme overlays. Preparation of floodplain management plan and local floodplain development.

Tooronga Village Development – Flood analysis

Client: Stocklands

A detailed hydraulic modelling assessment to determine innovative measures to provide appropriate flood impacts. Close liaison with relevant authorities to facilitate planning approvals.

VCAT appeal – Gisborne Supermarket

Client: Morgan IGA Supermarkets

Assessment of flood behaviour and potential flood related development impacts. Preparation of documentation for VCAT appeal. Expert witness appearance at VCAT.

Keysborough Waterways

Client: Watsons Pty Ltd

A detailed hydraulic modelling assessment to determine innovative measures to provide appropriate flood impacts and wetlands performance. Close liaison with relevant authorities to facilitate planning approvals.

